

Center for School, Health and Education



A Program to Improve Graduation

by Integrating Public Health Prevention
and Primary Care in Schools

Informational Webinar for Potential Participants



Agenda

- Overview of the Center
- Strategy
- Program Activities, Expectations & Timeline
- Questions & Comments



*The recording and slides will be sent to all registrants on **Thursday, November 2.***

Overview of the Center

Center for School, Health and Education



Meet the CSHE Team!



Tia Taylor Williams

MPH, CNS

Director



Kelly Nelson

MPH

Senior Program Manager



Darien Mather

MPH

Program Associate



Kanika Harris

PhD, MPH

Consultant

Our Mission

To increase health and educational success in students by providing a strategic response to the social determinants that impede both. These barriers may manifest in behavior and may also be structural. They may have already “presented” as problems or may pose potential risks. They may impact individuals or may impact the school population.



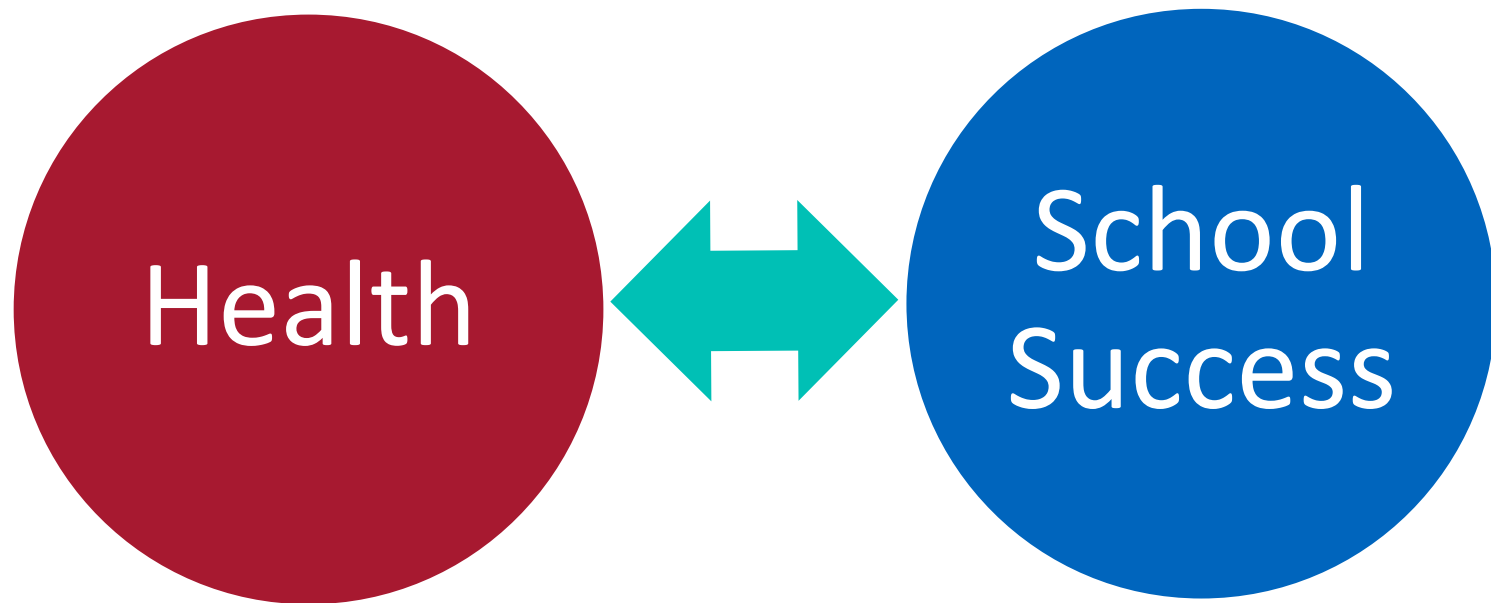
The Strategy

Center for School, Health and Education

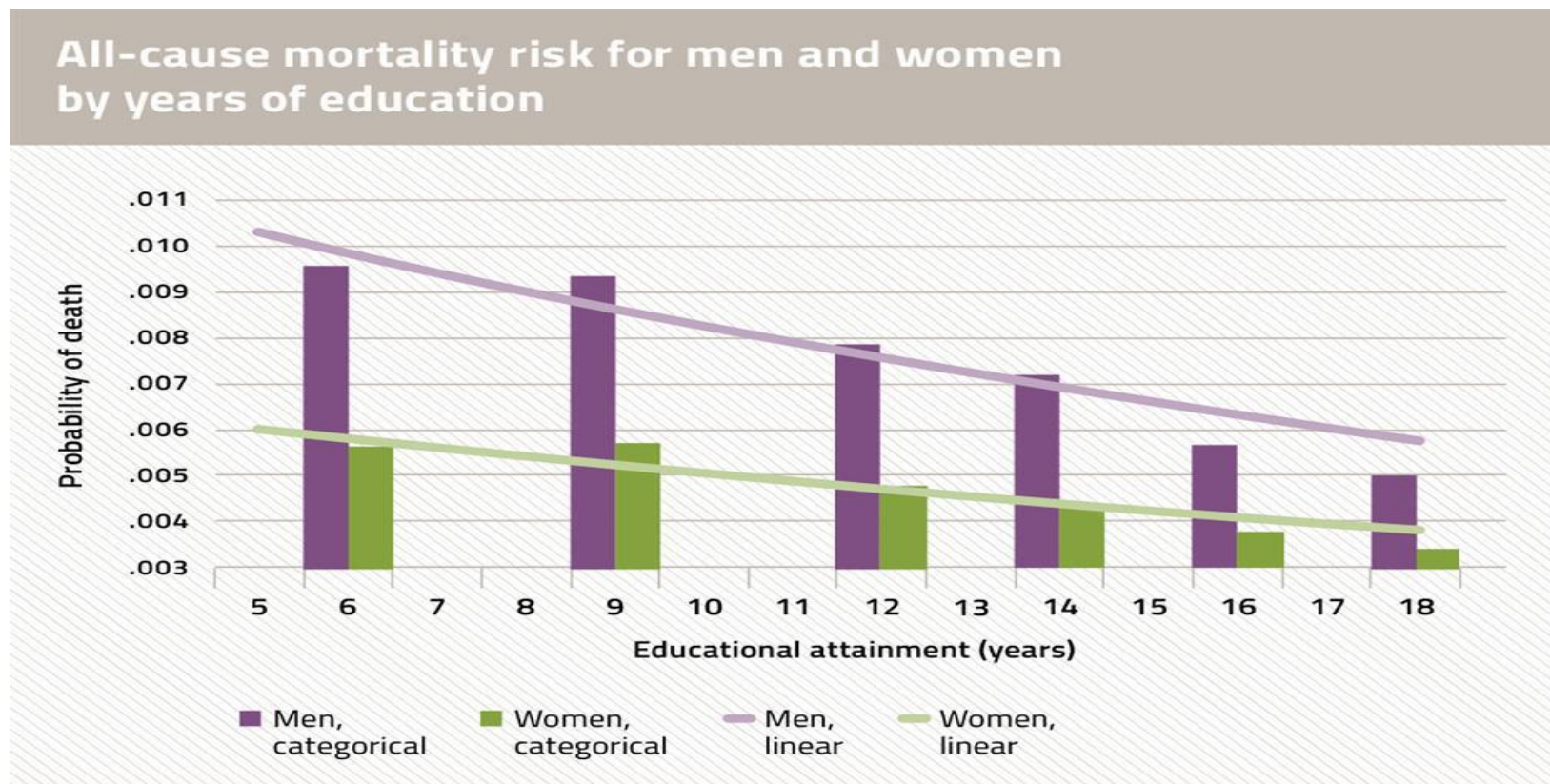


Reframing Graduation

Health and Education: Two Sides of the Same Coin



The Health Consequences of Dropout

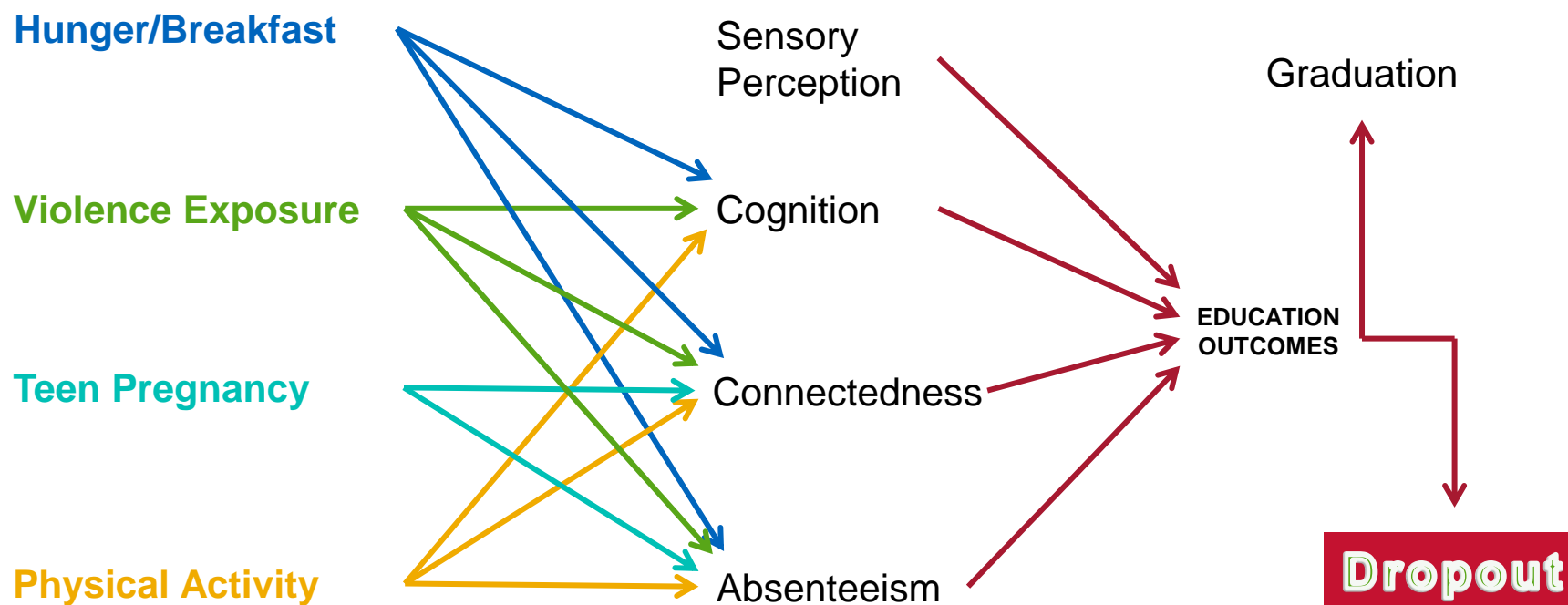


Data derived from regression modeling. Reprinted from Ross et al. Demography. 2012;49:1157-83.

Source: Center on Society and Health

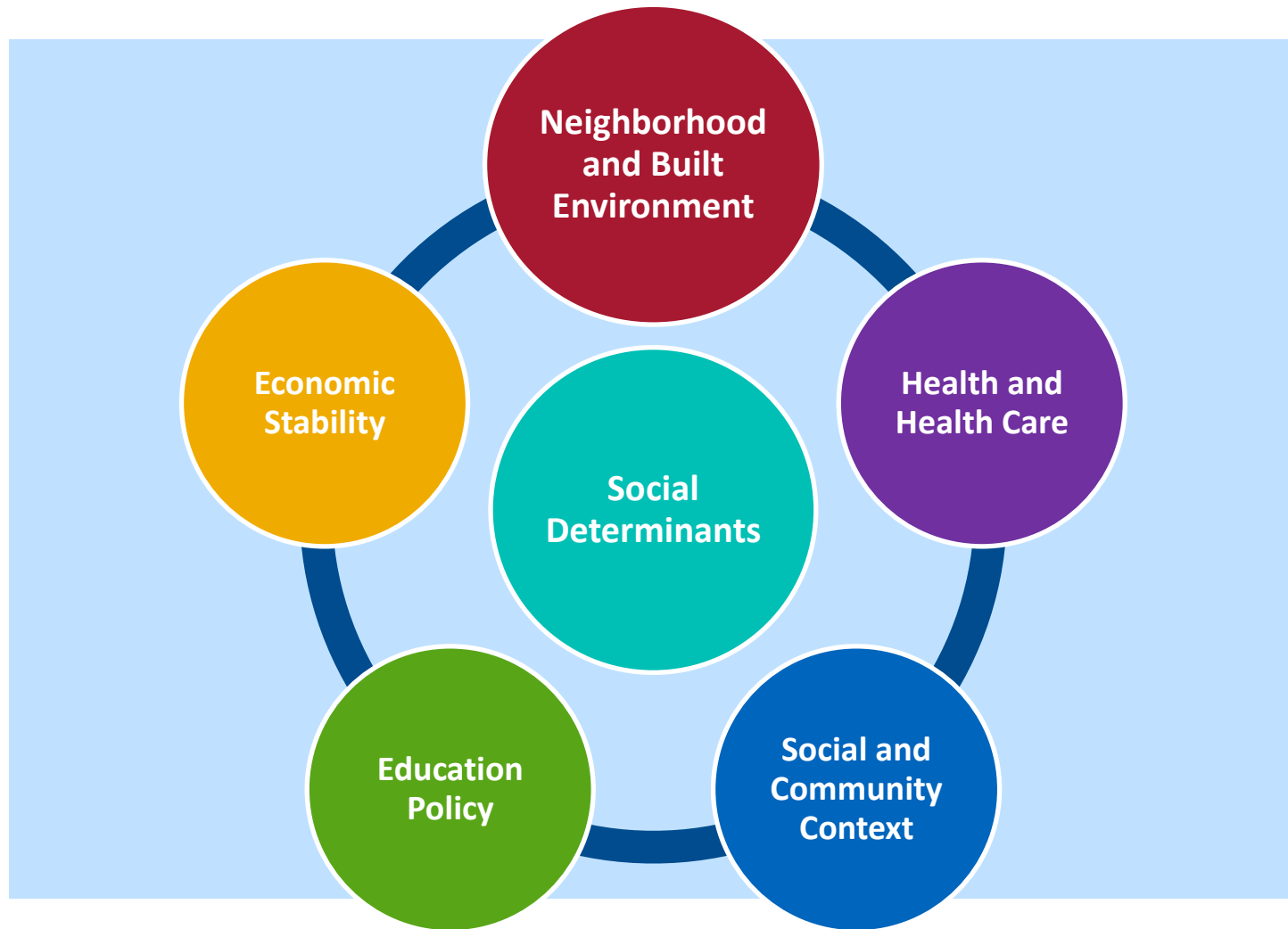
The Causal Pathways to Dropout

Common Educationally Relevant Health Disparities for Urban Youth



Source: Charles Basch

Social Determinants of Health & Education



Promise of School-Based Health Care

- Attract harder-to-reach populations
 - Racial minorities
 - Males
- Co-located services
 - Mental health care
 - Social conditions
- Risk assessments
 - Early intervention

The Program

Center for School, Health and Education



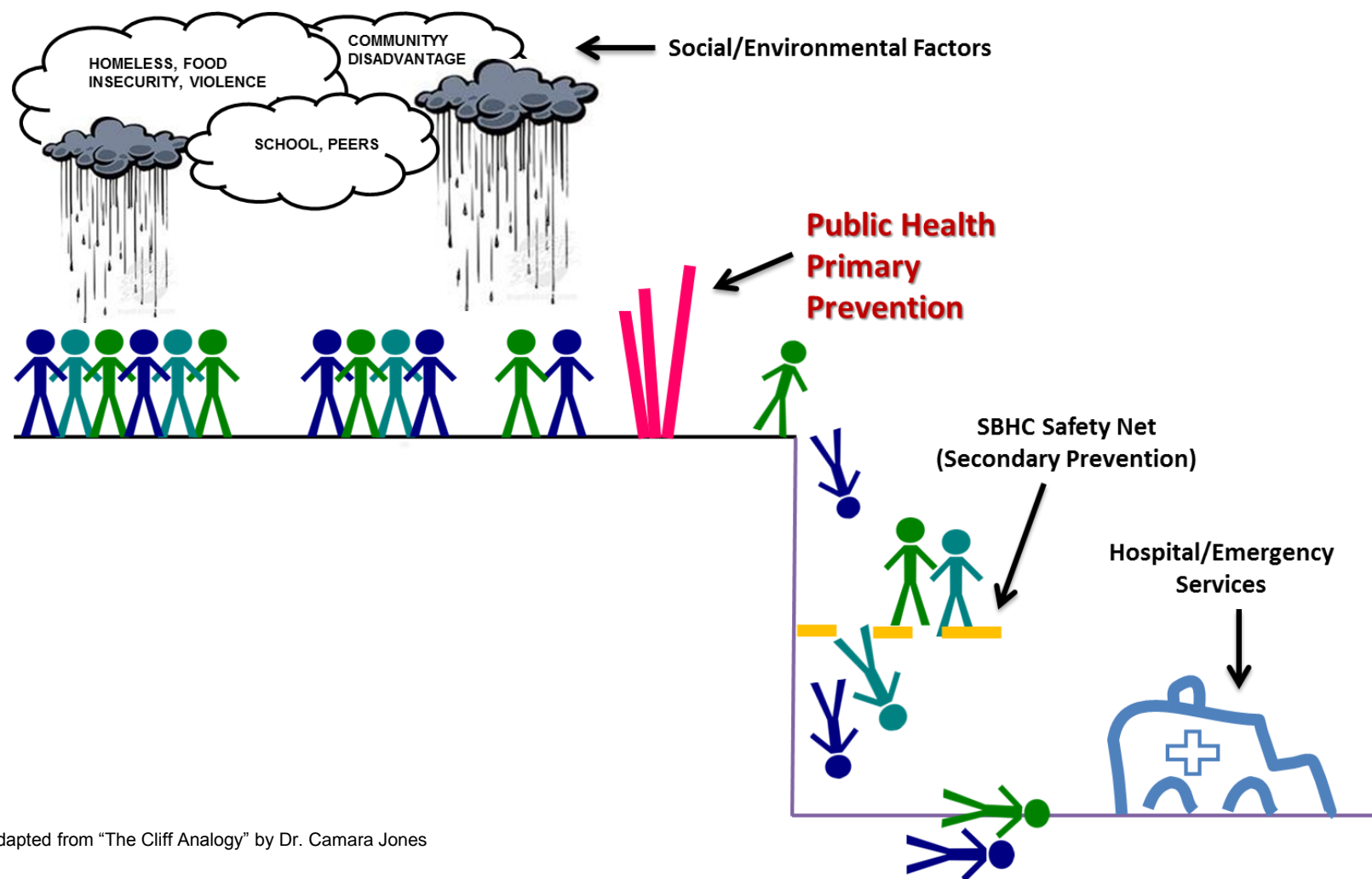
A Program to Improve Graduation by Integrating Public Health Prevention and Primary Care in Schools

Program Goals

- Focus on graduation!
- Increased attendance
- Decreased disciplinary actions
- Improved housing and food security
- Improved school climate



A School-wide Response



Adapted from "The Cliff Analogy" by Dr. Camara Jones

Program Components

- Capacity Building Assistance (CBA)
- Improving Staff-Student Interactions in Challenging Environments (MI)
- Managing Chronic Stress in Urban Minority Youth (CS)
- Technical Assistance (TA)

Capacity Building Assistance (CBA)

- CBA consists of 8 learning modules that introduce the public health framework of the program
- Approximately 26 hours of learning content and engagement across modules, including:
 - Guided video segments
 - Required reading
 - Interactive group discussion sessions
- Proficiency assessments and evaluations after each module

Technical Assistance (TA)

With step-by-step coaching from CSHE, each project site will:

- Conduct a school-wide needs assessment
- Synthesis of assessment results
- Develop and implement an action plan based on synthesis
- Participate in high-level evaluation of outcomes

The Action Plan Strategy

1. Clinical interventions

Approaches with individuals and groups, inside and outside of the clinic

2. Primary Prevention*

Approaches with the school-wide population

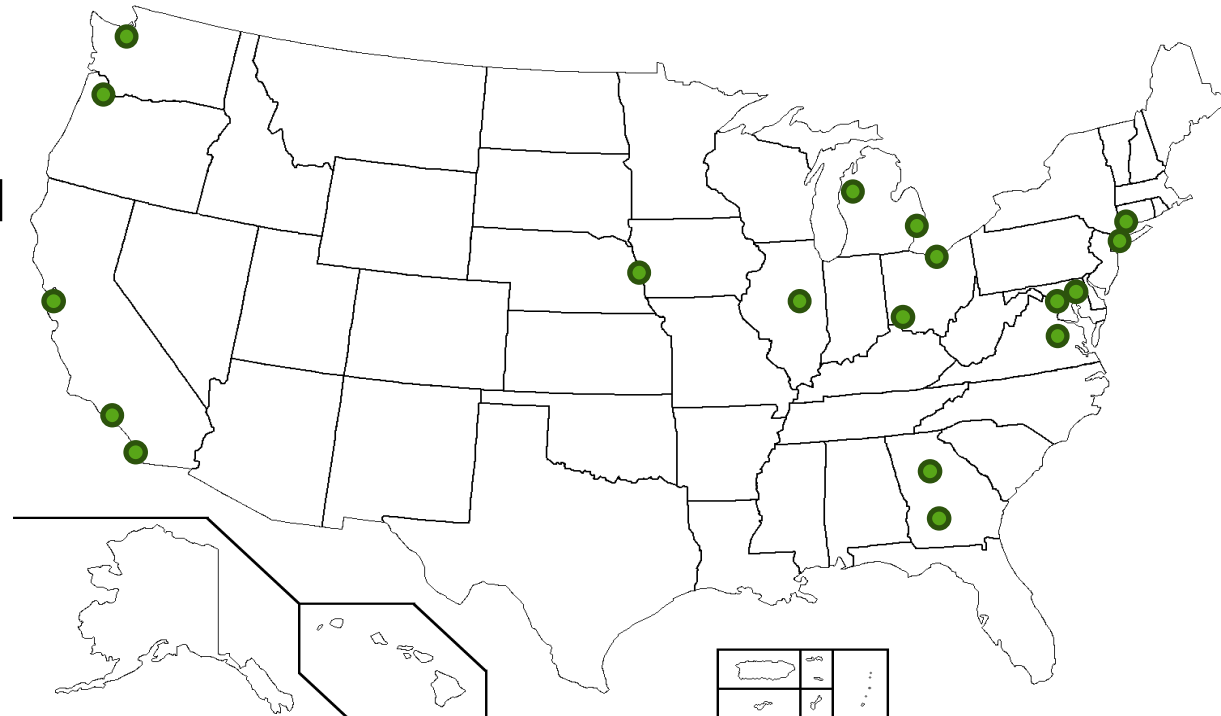
3. Systems interventions*

Policies and practices with the clinic, school, school district or community

**key emphasis of program*

Program Reach

- K-12 schools
- SBHC sponsorship
 - Community-focused nonprofits
 - Federally Qualified Health Centers (FQHC)
 - School districts
 - Local health departments



Snapshot of Strategies Across Participating Sites

Primary Prevention

- Food Pantry
- De-escalation rooms
- Social and emotional learning curriculum
- Universal access to intramural sports and arts
- Mindfulness over PA system in morning

Systems Interventions

- Universal breakfast, lunch, dinner, & snacks policy
- Peer juries and mediation
- Peer mentoring
- Universal, de-stigmatized washer/dryer, shower access
- Employment workshops and life skills training for families

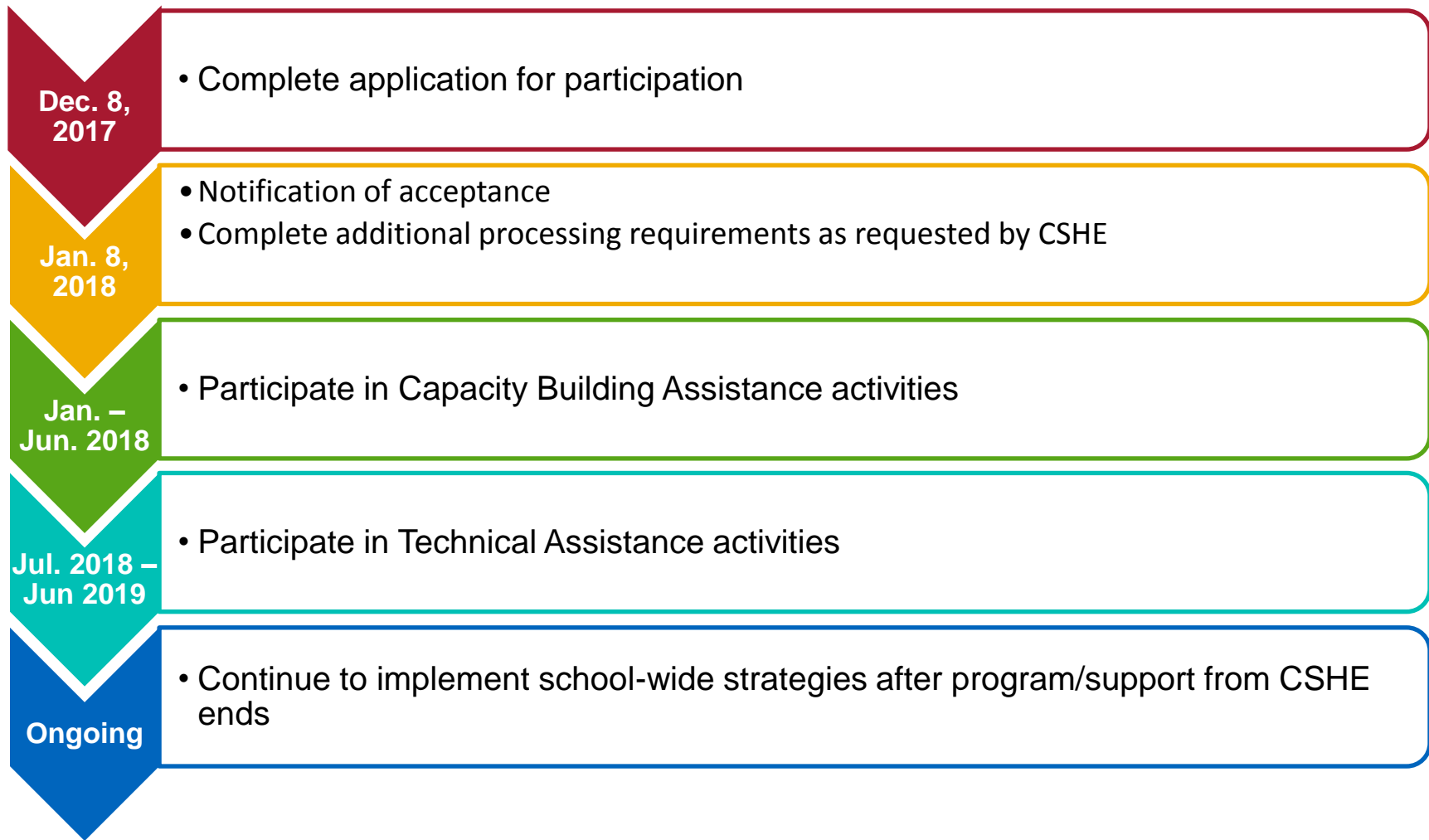
Eligibility

Project Site: school and its SBHC

The **Project Team** should consist of

- At least **3 core members** who participate in all program activities:
 - 2 SBHC staff
 - 1 school staff
- Supported by the **Team Leaders**:
 - Principal (and/or their designated liaison)
 - SBHC manager
 - SBHC sponsoring organization administrator

Program Timeline



Thank You!



Questions?

*The recording and slides will be sent to all registrants on **Thursday, November 2.***

Center for School, Health and Education

