

Center for School, Health and Education

Public Health Capacity Building Assistance for SBHC Leaders  
A CDC Funded Learning Series

Module 2-Using Population Data to Inform Integrated Practice



## Assessing Individual and Population Health Risk Behaviors Using Standardized Tools

Jennifer Salerno, DNP, CPNP, FAANP  
Possibilities for Change

Center for School, Health and Education at APHA  
January 12, 2015




---

---

---

---

---

---


---

---

### Guiding Questions

**Instructions: Please use the questions below to frame your thinking as you review this presentation and in preparation for your group discussion session**

1. Do you routinely provide vaccinations or other preventive services in your SBHC? If yes, is adolescent risk screening treated with the same systematic approach?
2. How do you assess adolescent health risk in your SBHC and is it an integrated part of your workflow?
3. Do you report on – and/or track – risk trends in your population over time?
4. Do you report on – and/or track – the effectiveness of your risk reduction counseling efforts and outcomes?




---

---

---

---

---

---



---

---

### Rapid Assessment for Adolescent Preventive Services © (RAAPS)

*Identifies risk behaviors contributing most to serious injury and premature death in adolescents.*

*Is an evidence based, time efficient screening tool to be used by professionals working with youth in any setting.*


---

---

---

---

---

---

---

---

## RAAPS Origin

RAAPS was born at the University of Michigan out of research & practical need:

- Need to *Identify Risk Behaviors*
- Need for an *Engaging Process*
- Need for *Counselor Support*
- Need for *Actionable Data*



---

---

---

---

---

---

---

---

## RAAPS. Born at the University of Michigan

- **21 question** screening tool can be completed 5-7 minutes and addresses risk behaviors in:
  - Diet & Exercise
  - Substance Use
  - Depression & Suicide
  - Violence & Safety
  - Sexual Health
  - Unintentional Injury
- All questions have been **scientifically validated**
- **Secure cloud-based database** meets regulatory requirements; RAAPS can be accessed anywhere on any internet enabled device



---

---

---

---

---

---

---

---

## RAAPS – PH (Public Health)

**Incorporates an assessment of social factors contributing to absenteeism/poor performance**

**Intent:**

- + Identification of significant factors (poverty)
- + “Adolescent Friendly” questions
- = **Creation of a strong tool for identifying contributing factors to school drop out**



---

---

---

---

---

---

---

---

## RAAPS – PH (Public Health)

**Customized: Addition of 9 questions on social determinants of health affecting graduation rates**

- Home Environment
  - Attendance
  - Tangible Needs
- Hunger
- Asthma
- Dating Violence
- Literacy/Academic Success



---

---

---

---

---

---

---

---

## Who We Are

**RAAPS has *transformed* risk screening** for teens and professionals alike through:

- Use of **technology** – teens respond more honestly than face-to-face or paper-based surveys
- **Counseling tools** for professionals - support even the most difficult risk behavior discussions
- Easy to use **reports** - measure improvements over time and identify population risk trends



---

---

---

---

---

---

---

---

## Innovative Features... Health Professionals

- EHR Format for Documentation
- Evidence-based Suggestions for Risk Reduction
- Individualized Patient Health Education
- Referral Tracking
- Easy to access Data!



---

---

---

---

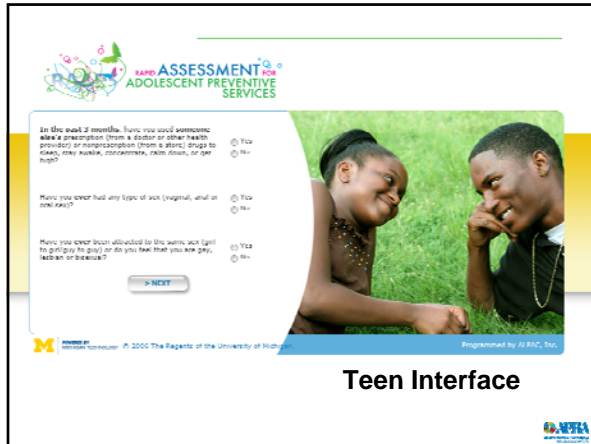
---

---

---

---





Teen Interface

---

---

---

---

---

---

---

---

---

---

---

---




---

---

---

---

---

---

---

---

---


---

---

---

## School Wide Use

- All students screened
- RAAPS reports:
  - Identify highest risk youth
  - Target youth for programming/interventions
  - Monitor trends, behavior changes over time, and outcomes



---

---

---

---

---

---

---

---

---

---

---

---

## What Do You Need to Know? Utilizing Data Effectively

- What are the greatest risks in your teen population?




---

---

---

---

---

---

---

---

## Know Your Teen Population's Top Risks

Know Assessment for Adolescent Preventive Services

Know Date: 01/01/2013    End Date: 01/31/2013

As a center with specific administrative models, or a combination of administrative school fields of interest users, (Schools/Regions, Agencies)

**Risk Ranking**

Rank	Description	Risk Answer	Risk Total	Risk %
1	Do you ever get into fights or are involved, beat or mistreated?	Yes	511	51.1%
2	Do you always come to school when you are sleepy, misbehaving, disinterested, inattentive, inattentive, talking or out-of-control?	No	491	49.1%
3	When you are angry, do you do things that get you in trouble?	Yes	50	5.0%
4	During the past month, did you often feel sad or down or through you had nothing to look forward to?	Yes	508	50.8%
5	In the past 3 months, have you missed school, work, or other events, classes, or school activities ("absent") because of a health problem?	Yes	240	24.0%
6	In the past 3 months, have you missed school, work, or other events, classes, or school activities ("absent") because of a mental health problem?	Yes	317	31.7%
7	Has your ever been in a fight or been hurt?	No	404	40.4%
8	Has your ever been in a fight or been hurt because of a fight or fight?	No	400	40.0%

---

---

---

---

---

---

---

---

RAAPS DATA – 2011 To 2013

## TEEN RISKS: DATA & TRENDS




---

---

---

---

---

---

---

---



## What Do You Need to Know? Utilizing Data Effectively

- What are the greatest risks in your teen population?
- What subpopulations of increased risk exist within your population?




---

---

---

---

---

---

---

---

## Know Your Top Risks by Payor Type...

**RAAPS ASSESSMENT for ADOLESCENT PREVENTIVE SERVICES**

Press on Questions to view you are fast and help how to use RAAPS at

- Identify Issues
- Assessment
- Clinical Insurance Plan
- Insurance Plan (Medicaid/CHIP)
- Language
- Ethnicity
- Gender
- Age
- Special

Group: [ ] Gender: [ ] Age: [ ]

Language: [ ] Ethnicity: [ ]

Special: [ ]

Run Date: 01/17/2013    End Date: 01/14/2013

Download Report    Print w/ CSV

**Ad-Hoc Report**

Id: How you are fast any type of use (original and on and on?)

Age	Ethnicity/Gender	Insurance	Group	Gender	Language	Age	Total	%	% Risk
Yes		County Insurance Plan					5	0.8%	0.8%
Yes		All Child					22	3.4%	2.6%
Yes		Private					101	17.0%	14.9%
Yes		Medicaid Insurance Plan (Medicaid/CHIP)					297	49.9%	17.8%
Yes		Language					20	3.4%	13.3%
Yes		All Insurance					40	6.2%	5.1%
Yes		County Insurance Plan					1	0.1%	
Yes		All Child					5	0.8%	

---

---

---

---

---

---

---

---

## RAAPS DATA – 2011 To 2013 DATA BY AGE




---

---

---

---

---

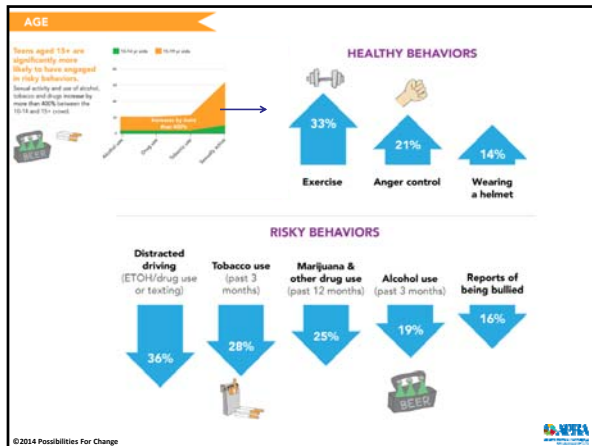
---

---

---








---

---

---

---

---

---

---

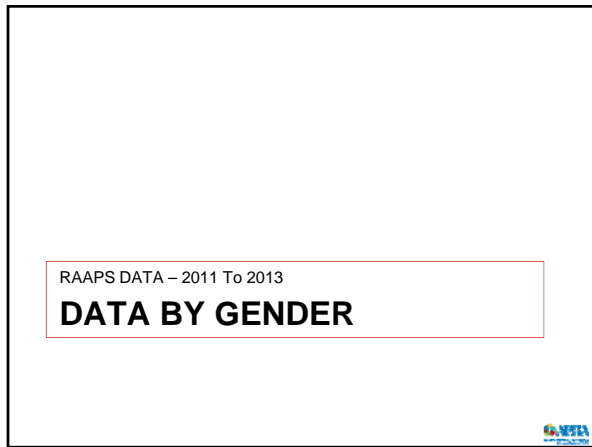
---

---

---

---

---




---

---

---

---

---

---

---

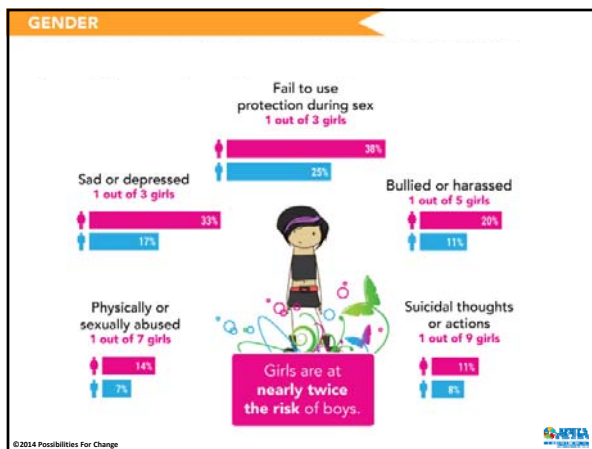
---

---

---

---

---




---

---

---

---

---

---

---

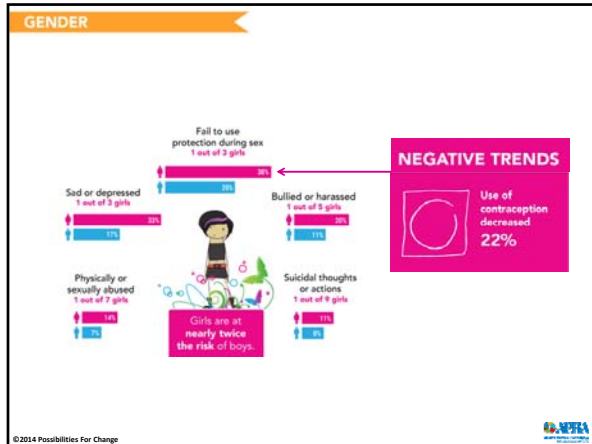
---

---

---

---

---




---

---

---

---

---

---

---

---




---

---

---

---

---

---

---

---

**What Do You Need to Know?  
Utilizing Data Effectively**

- What are the greatest risks in your teen population?
- What subpopulations of increased risk exist within your population?
- **What is the effectiveness of the risk counseling you are providing?**

©2014 Possibilities For Change

---

---

---

---

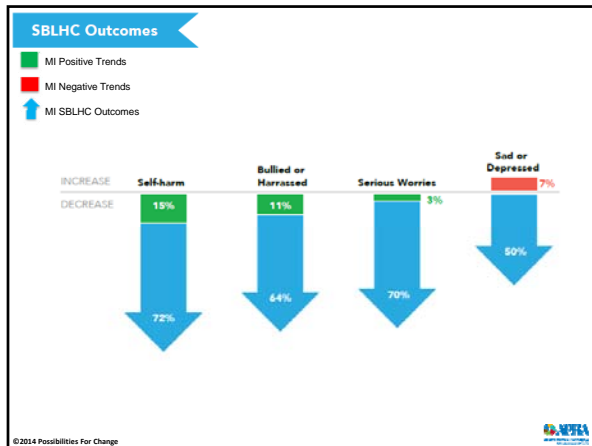
---

---

---

---






---

---

---

---

---

---

---

---

---

---

---

---

## RAAPS Utilization

(as of 12/14)

**Downloaded for Use:**

- 49 States
- 28 Countries

**Cloud-Based RAAPS:**

- 168 School Based and Linked Health Centers
- 14 States

---

---

---

---

---

---

---

---

---

---

---

---

## A CALL TO ACTION...

---

---

---

---

---

---

---

---

---

---

---

---

## Champion Adolescent Risk Assessment

**75%** of the *primary causes of premature death and injury* in the adolescent population *are avoidable*



- Ensure every adolescent is screened with a standardized risk assessment instrument
- At the first appointment, in cases of concern, and annually thereafter
- And receives evidence-based counseling and follow-up as appropriate



---

---

---

---

---

---

---

---

## Next Steps....



**Check Out Website:**

[www.raaps.org](http://www.raaps.org)

**Contact Dr. Salerno:**

[jsalerno@raaps.org](mailto:jsalerno@raaps.org)

---

---

---

---

---

---

---

---

## Presenter's Bio



Dr. Jennifer Salerno is a Pediatric Nurse Practitioner and an advocate for adolescent risk reduction using youth-friendly technology and effective communication strategies. Jennifer has practiced for nearly 20 years working with diverse adolescent populations and has served as a board member/advisor on many state and national organizations and initiatives to improve adolescent health.

In keeping with her favorite quote attributed to Mahatma Gandhi: *"Be the change you wish to see in the world"*, Jennifer founded "Possibilities for Change" and has worked in partnership with youth to develop the cloud-based RAAPS risk screening system which is now being used by providers worldwide to identify and reduce adolescent risk behaviors. The effectiveness of the RAAPS system, and Jennifer's work in the area of teen risk reduction, was recently recognized by the Society for Adolescent Health and Medicine, with the 2013 Hilary E.C. Millar Award for Innovative Approaches to Adolescent Healthcare.



---

---

---

---

---

---

---

---

Center for  
School,  
Health and  
Education

**Thank You**



---

---

---

---

---

---

---

---